

廣東道官立小學

課程發展

與香港中文大學合作課程計劃—— 「喜閱寫意：賽馬會讀寫支援計劃」



粉嶺神召會小學教師到校分享「喜閱寫意」教學心得。



學生正用心進行執筆訓練。

「喜閱寫意」教材真豐富，又精美。



「喜閱寫意」內容注重實踐，學生正透過動作學習字型結構。



學生認真地進行討論。

香港中文大學教育學院

「協助小學中國語文教師建立專業學習社群計劃」



學生運用觀察法進行遊記的寫作。



我們到九龍公園親身體驗大自然，把所見所聞記錄下來。



香港教師到廣州進行交流活動。



廣州市教育部門官員分享廣州的課程特色，我們獲益良多。

「協助小學中國語文教師建立專業學習社群計劃」(第四期)

廣東道官立小學

總結分享會

研究題目：
「透過描寫人物外貌、心理、動作及表情，提升學生描寫人物的能力」

計劃後，本校教師出席總結分享會，分享教學成果。

「利用數碼繪畫課程發展學生基本及高階思維能力」

課程章

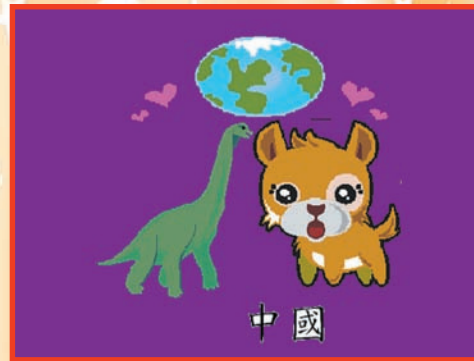
課程發展



學生運用數碼技巧進行繪畫。



浸會大學葉國洪博士講解「高階思維能力」的理念。



學生從作品中抒發對中國的情懷。

教育局校本課程發展組支援常識科

高級學校發展主任余忠權先生定期到校與課程主任、科主任及科任老師進行共同備課。



在教師專業發展範疇上，余忠權先生向常識科老師講解如何發展學生的「高階思維」。



張燕媚校長致送紀念品，多謝教育局校本課程發展組從2007-2010年間，對本校三、四、五年級常識科的支援。



課程發展方向主要是專題研習和課程策劃兩方面。

Establish a language-rich environment to facilitate pleasurable learning of English

The roles of the Native English Teacher(NET) and English Language Teaching Assistant(ELTA) at Canton Road Government Primary School have been evolving since 2001. From the inception of the NET scheme and inclusion of ELTA lessons, students have enhanced their interest and confidence in learning and speaking English and as such, the school community highly values these programs.



Ms Celia Palmer



Mr Matthew Gillespie



Ms Monique Moloney



Ms Ritika Sethi

Since the first native speaking teacher from Australia began her classes, both roles have brought about many positive experiences for teachers and students alike.



Every student is invited to the English Wonderland on Thursdays at lunchtime to enjoy games and activities with the ELTA.



The NET facilitates the development of students' vocabularies and structure usage in the reading workshops.



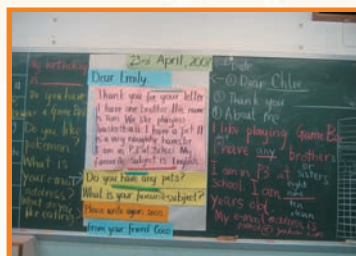
The set-up of the new English Wonderland enables co-operative group learning situations to happen and children are well versed at working in their group settings.



The NET has also been responsible excursions outside the school where authentic opportunities to speak English exist, English week activities and the festival of Halloween celebrations, as well as day-to-day interactions with students.



The NET has been responsible for such initiatives as a pen-pal exchange program with native speaking students in Australia.



A typical lesson follows the "PPP" style of lesson, where "presentation" of new words and key language structure is followed by the opportunity for students to "produce" the language and then "practice" at home.